

## MODEL 246A

### EMI SNIFFER FOR POWER PLANTS

- Detect EMI sources on large motors and generators
- Identify the source...instrument helps to identify specific device causing EMI

The Model 246A EMI Sniffer is a very sensitive broad band pulse detector, optimized to quickly detect and locate sources of EMI originating in power plants on large motors, generators, PT cabinets and ISO phase bus.

For example, the EMI Sniffer will detect EMI originating at arcing shaft bearings, sparking ground brushes and arcing connections and insulators.

Designed for use by field personnel, the EMI sniffer is straightforward in its operation. Technicians can compare EMI levels from different AC machines or trend EMI levels over time to identify likely trouble spots.

#### Features:

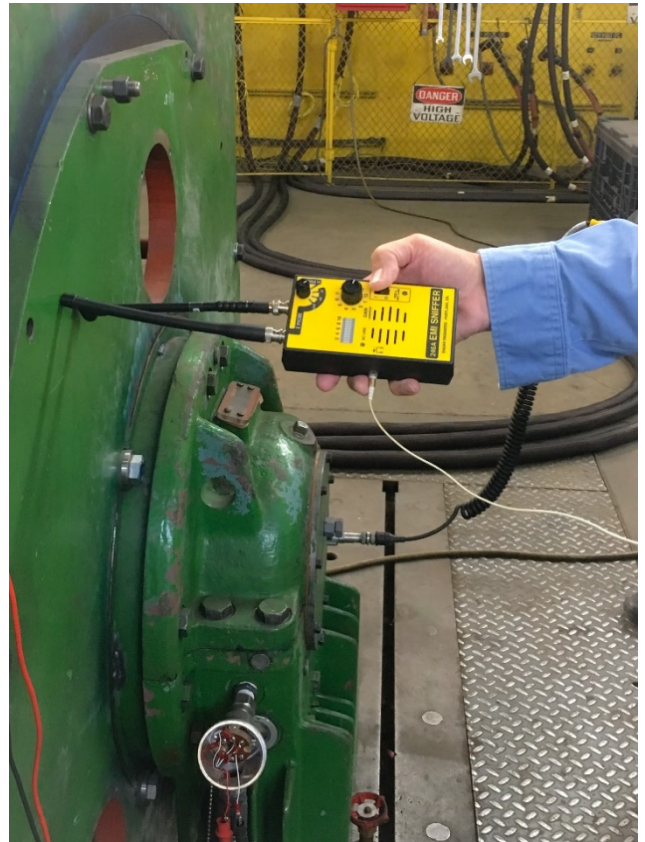
High Sensitivity Pulse Detector  
Signal Range ~85dB  
Separate On/Off switch  
Twelve Step Gain Control ~5dB/Step  
LED Bar Graph ~3dB/Segment  
Selectable Modes: H Field & E Field  
Four Bands: VLF, LF, HF, UHF  
AC Line Synchronous Indicator  
E & H Field Antennas  
Speaker  
Headphone Jack

#### Power Source:

One 9V Alkaline Battery

#### Mechanical:

Weight: ~ 13oz  
Box Dims: ~ 5.5" X 3.25" X 1.5"



4KV Motor Bearing Inspection